

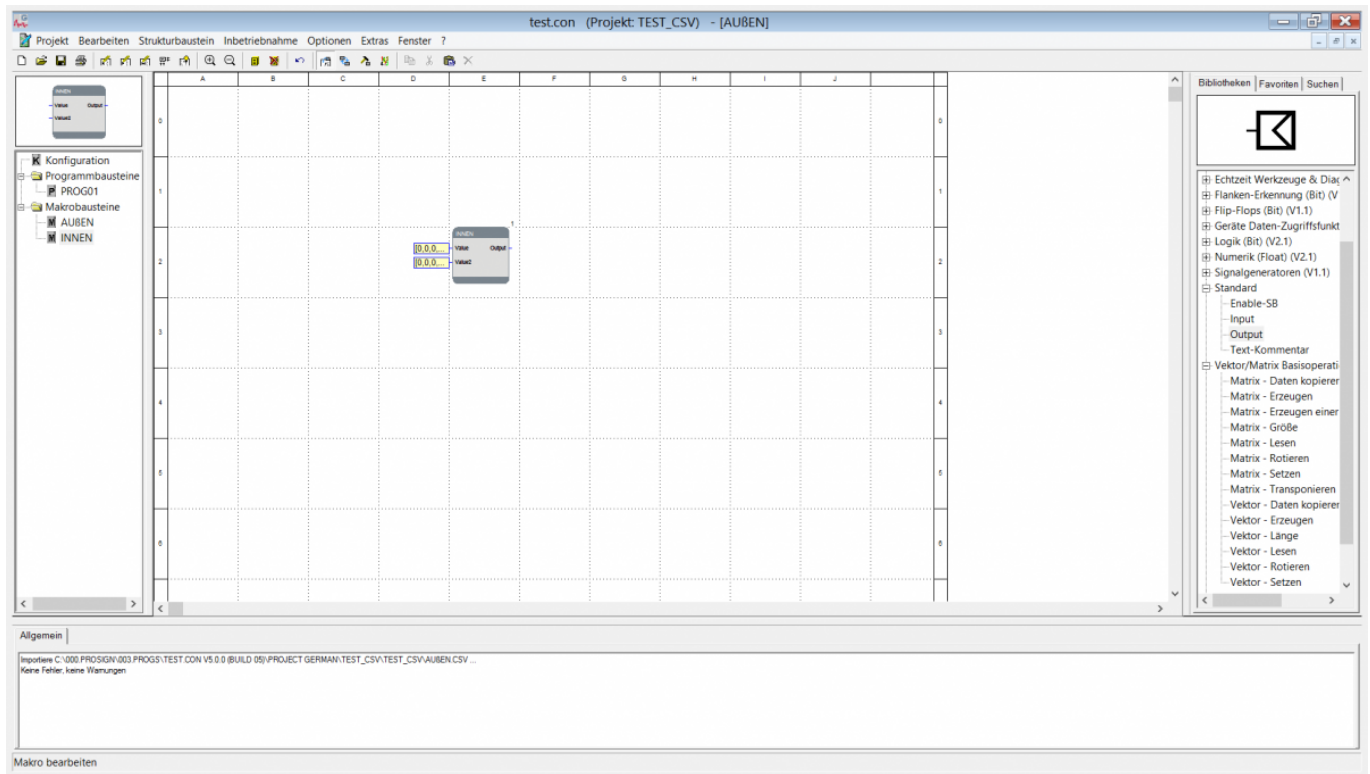
# Import parameters from Excel

If you want to use parameters from an excel sheet in iCon-L you have to follow this instruction.

The parameters can only be saved and loaded in the editing and run mode, not in the online mode.

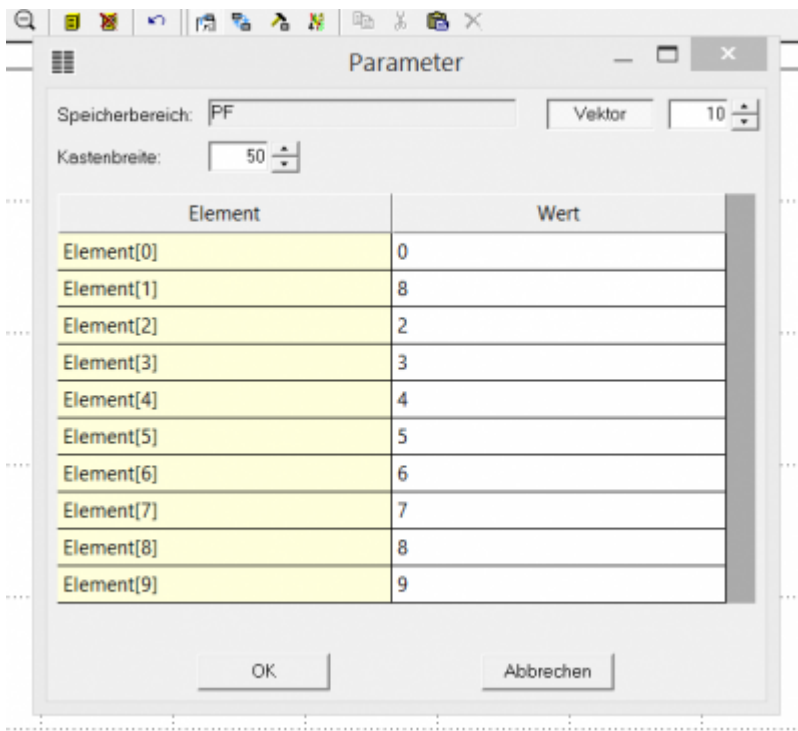
## Out and In

Assign global parameters to your macro



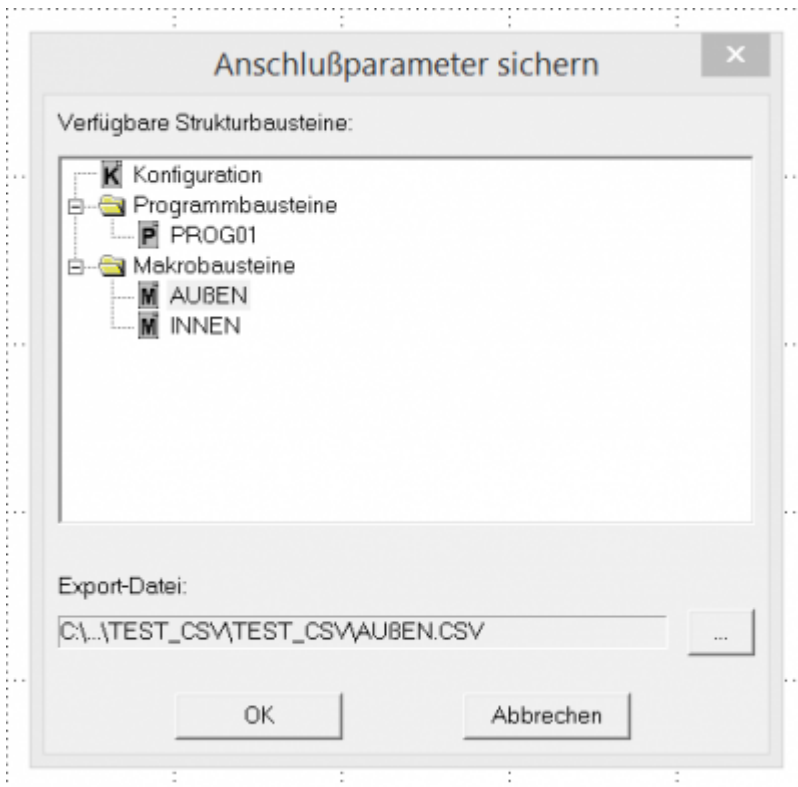
When you store your parameters, you have to store the macro above you parameters, otherwise the parameters will not be stored

## Create Parameter



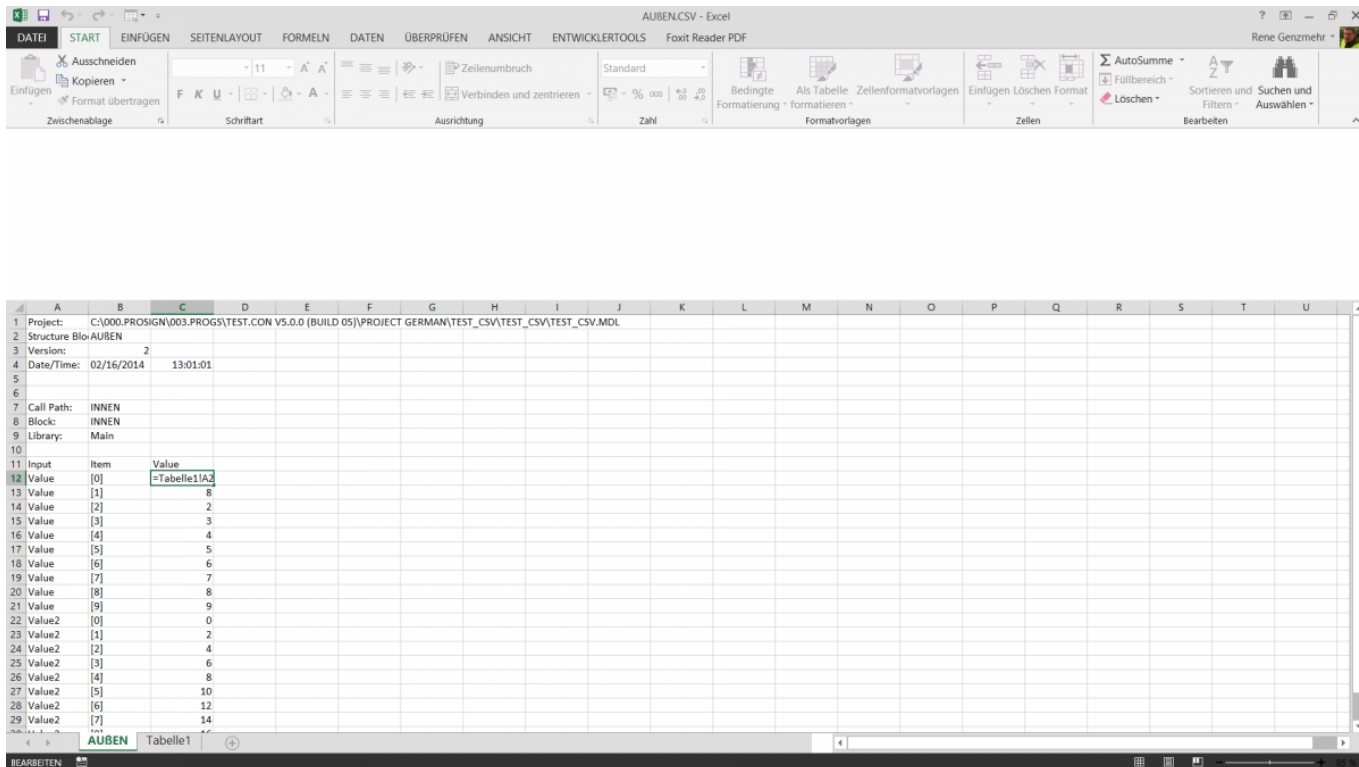
You can directly edit this parameters in iCon-L or you save this attributes.

## Store Parameter

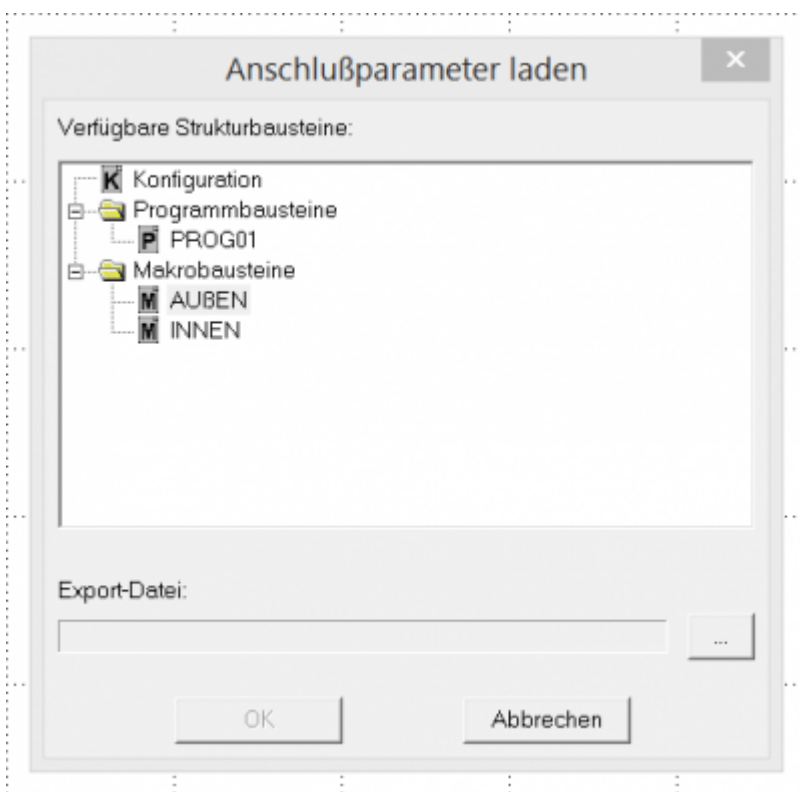


# Excel work

When you open the stored „CSV“ file in excel you can combine your data with the stored sheet.

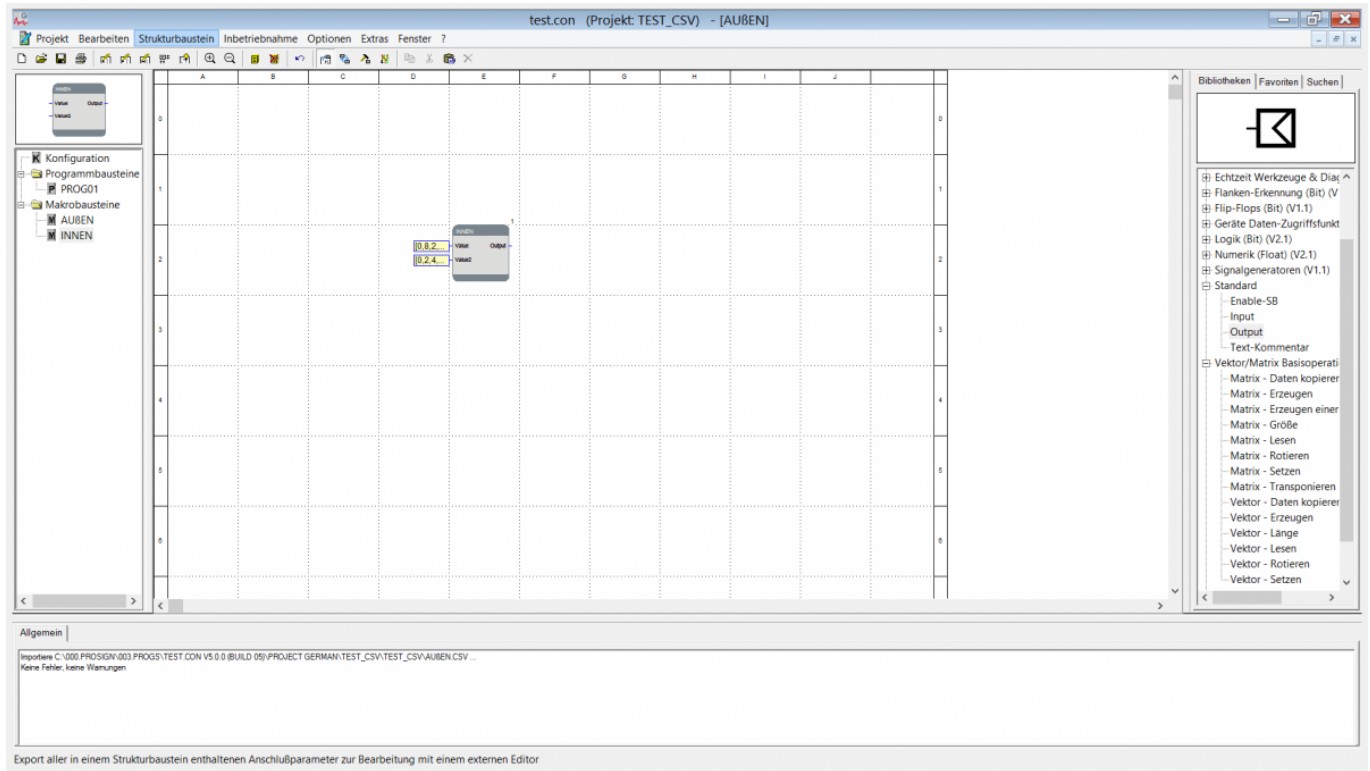


# Load Parameter



After you combined your data and stored the file you can load the „CSV“ file into iCon-L. Be sure, that you decide for the correct macro to load the data for.

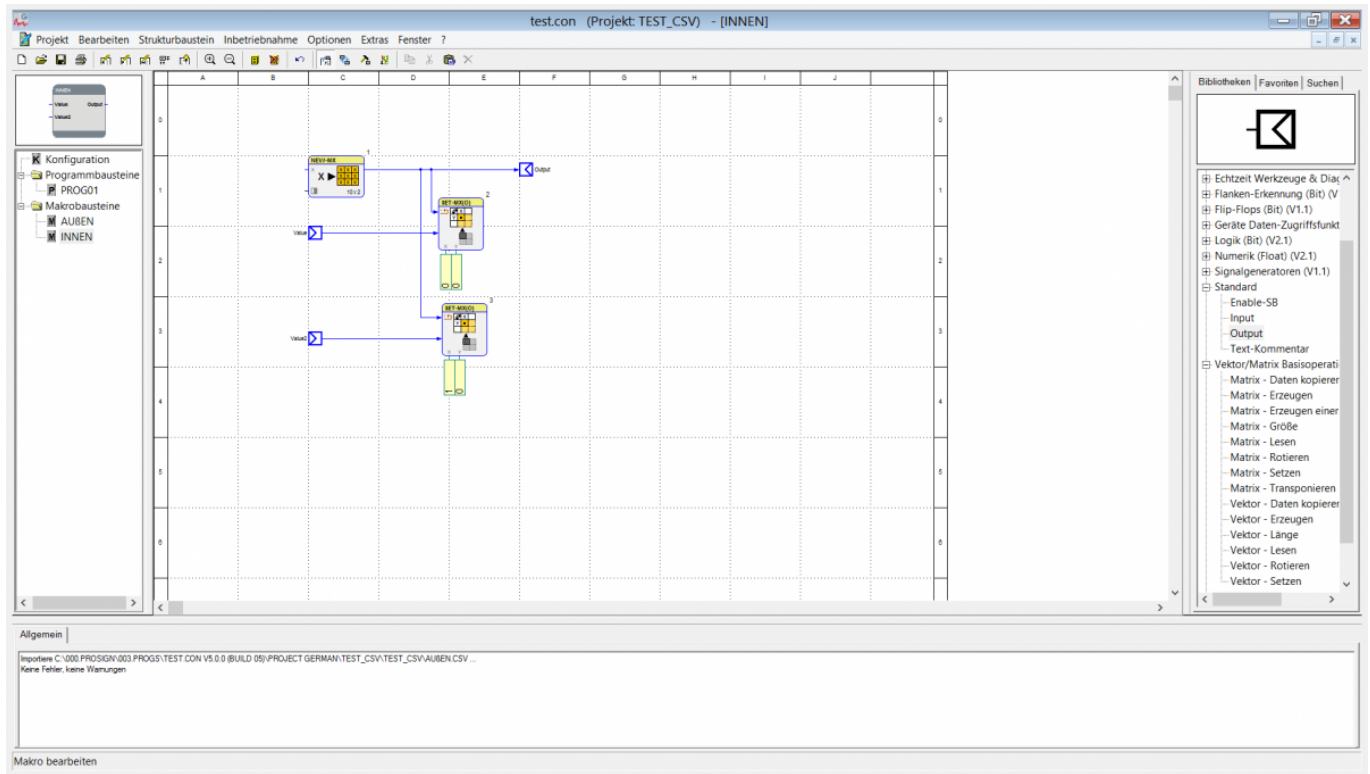
## Result



As the result, you see the datas from your excel sheet in iCon-L.

## Combine Vectors to a Matrix

If you want to have a matrix output instead of an vector output, you must combine the input parameters into a matrix.



## Tutorial Video

Das [Adobe Flash Plugin](#) wird benötigt, um diesen Inhalt anzuzeigen.

From: <https://wiki.pro-sign.de/psdokuwiki/> - **ProSign DokuWiki**

Permanent link: [https://wiki.pro-sign.de/psdokuwiki/doku.php/de:public:user\\_s\\_documents:icon-l:applications:excel\\_parameter](https://wiki.pro-sign.de/psdokuwiki/doku.php/de:public:user_s_documents:icon-l:applications:excel_parameter)

Last update: **2014/05/05 14:52**

